

RHINO CONNECT™

SOFTWARE

FAST! EASY! ECONOMICAL!

Facility Maintenance • Professional A/V • Datacom • Electrical • Security • Harness Houses



Create labels on your PC.
(Preview and edit, too.)



Print labels at the jobsite with
RHINO 6000 label printer.
(No need to key. No time wasted.)

To accelerate your RHINO labelling, use the innovative and easy **RHINO CONNECT™ Software** and create hundreds (or thousands) of labels before you arrive at the jobsite. To minimise your effort, this integrated software precisely matches the functionality of the RHINO 6000 label printer to print an array of professional labels (vertical wrap, flag, patch panel and more).

Using step-by-step **Label Design Wizard**, you can select label mode, width and length, import and serialise data – even insert, resize and rotate barcodes, symbols, graphics or logos. Once you preview and edit your work, just download from PC to RHINO 6000 label printer with the integrated transfer manager or print directly from the application.

- **Create** labels using the integrated step-by-step wizard
- **Insert** customised graphics, logos, symbols and industry terms
- **Serialise** data with built-in wizards
- **Import** data from any Windows®-based programme
- **Print** labels directly from RHINO CONNECT™ Software
- **Download** labels to RHINO 6000 label printer for on-site printing
- **Upload** label files for documentation purposes

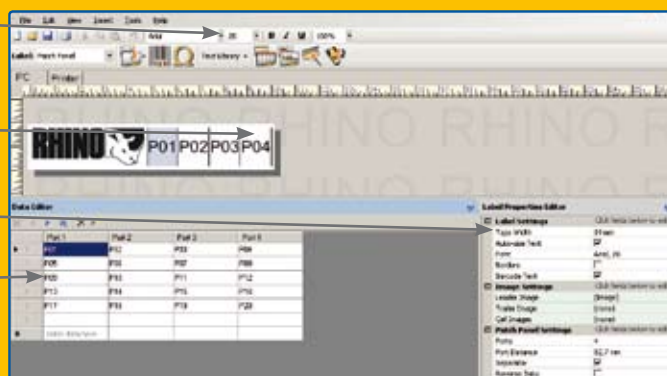
EXCLUSIVE FEATURES LET YOU LABEL LIKE A PROFESSIONAL – EVEN IF YOU'RE A BEGINNER.

Toolbar – Access frequently used functions including label type, symbols, label wizard, text library, transfer files and more

Label Preview – Preview labels (WYSIWYG)–What You See is What You Get

Label Properties – Edit and customise your label

Data Editor – Enter, import and edit data with spreadsheet-like functionality



RHINO 
PROFESSIONAL LABELLING TOOLS
HOW DO YOU SIGN YOUR WORK?™



EXCLUSIVE FEATURES GIVE YOU LABELLING POWER LIKE NEVER BEFORE.

Use **RHINO CONNECT™** Software when you want to:

Shorten the distance.

Let's say your next installation is on a site hundreds of miles from the office where the label specifications are. Just e-mail a CSV file of labels to the site. There, connect a RHINO 6000 label printer to the receiving PC and use RHINO CONNECT™ Software to download the files. Your installers can print as needed or modify as necessary.

Weather the storm.

Harsh jobsite conditions can challenge labelling accuracy and efficiency. So head indoors to your office and create labels with RHINO CONNECT™ Software on your PC. Then download to RHINO 6000 label printer – and each label will be ready to print. This way, frozen fingers won't mean delays or mistakes.

Increase everyday efficiency – reduce keying errors!

Have your project manager create the label files on his PC, then download to RHINO 6000 label printer the night before or first thing in the morning. Watch your installers get more done, with fewer labelling mistakes.

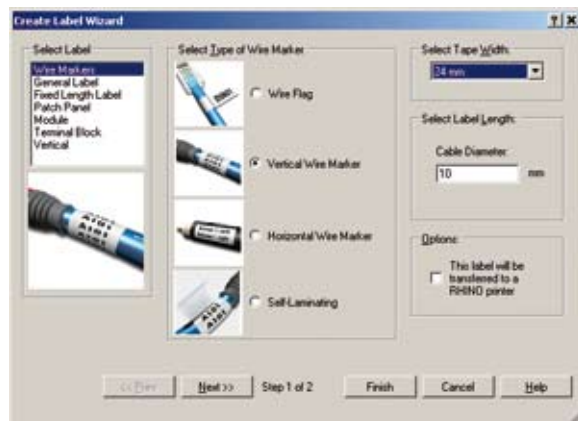
Document your labeling!

When each job is done, upload from RHINO 6000 label printer to your PC. This way, you can accurately update the labels you've printed.

Work seamlessly, from office to jobsite.

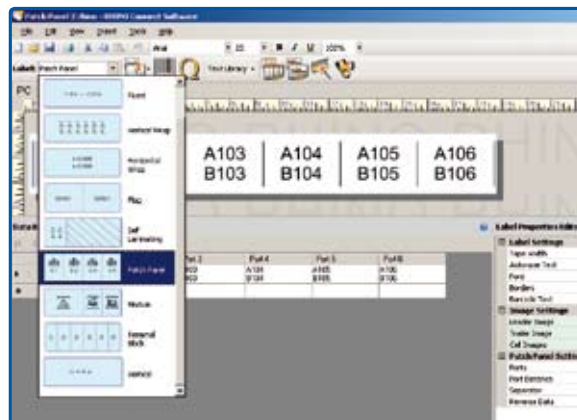
1 CREATE

- Select label type, length and width
- Import graphics, logos, symbols and data
- Serialise data, as needed



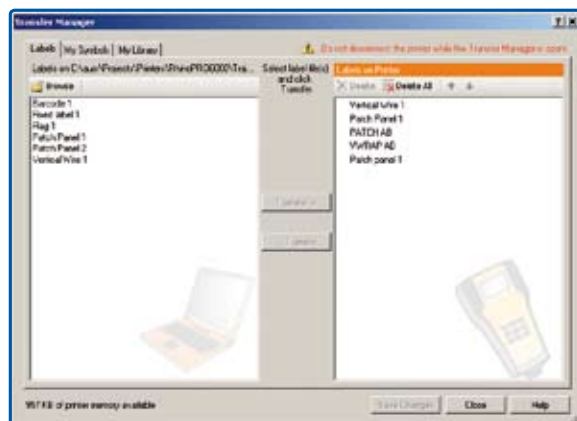
2 EDIT

- Customise
- Preview
- Correct



3 OUTPUT

- Download to RHINO 6000 label printer for jobsite printing
- Print from your PC
- Upload back to your PC for documentation purposes



RHINO CONNECT™ Software
S-code S0815720
Includes:
RHINO CONNECT™ Software
USB Cable



RHINO 6000 Hard Case Kit
S-code S0771940
Includes:
RHINO 6000 Printer
RHINO CONNECT™ Software
Hard Carry Case
24 mm Black-on-White Flexible Nylon Label Cartridge
9 mm Black-on-White Vinyl Label Cartridge
Li-ion Rechargeable Battery Pack
AC Adapter
USB Cable
Quick Reference Guide
RHINO 6000 User Guide CD
Registration Card

DYMO

Vyrobené: DYMO bvba
Industriepark-Noord 30
B-9100 Sint-Niklaas - Belgium

SANFORD BRANDS

A Newell Rubbermaid Company
www.sanfordbrands.com
Made in Belgium - © 2007 DYMO

RHINO 
PROFESSIONAL LABELLING TOOLS
HOW DO YOU SIGN YOUR WORK?™

S0829440